



RAZER SEA HQ

1 One-North Crescent (S) 138538

This property is a 6 minutes' walk away from one-north MRT Station.

Expecting completion in 2021 Q2, this 7-storey building serves as Razer's Singapore Headquarters.

CONTACT US

T: +65 8125 3515

E: leasing@boustead.sg



Site Plan: Powered by Streetdirectory.com

LOCATION

- 1 One-North Crescent (S) 138538
- Close proximity to CBD

ZONING

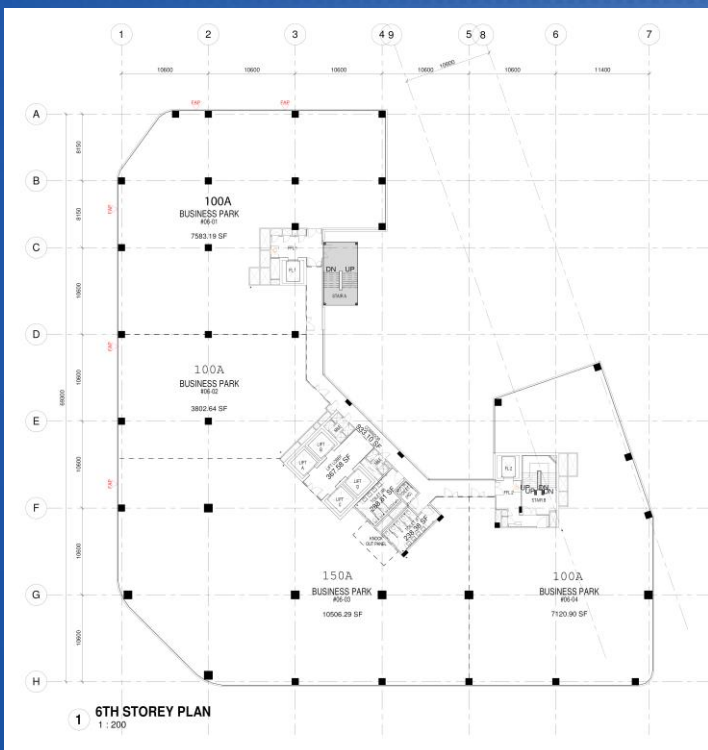
- BP / Office

ACCESSIBILITY

- 3 mins walk to nearby bus stops
- 6 mins walk to one-north MRT (fully sheltered)
- 10 mins drive to CBD
- Easily accessible from AYE

SUPPORTING AMENITIES

- Food Courts & other F&B establishments
- End-of-trip facilities



Typical floorplan on level 6

BUILDING SPECIFICATIONS

Proposed GFA

- 19,280 square metres/207,540 square feet
- BP - 16,389 square metres/176,411 square feet
- Office - 2,892 square metres/31,129 square feet

NLA

- 17,353 square metres/186,787 square feet

No. of Floors

- 7 floors

Floor to Floor Height

- Floor to soffit = 4.55m
- Clear Ceiling Height = 3m

Floor Loading

- 1st Floor: 12.5kN/m²
- 2nd-4th Floor Carpark: 2.5kN/m²
- 5th-8th Floor : 7.5kN/m²

Power Supply

- 3 MVA Incoming Supply

Air Conditioning

- District cooling system

Lift(s)

- 4 Passenger (25 pax - 1700kg)
- 2 Fireman/Service (48 pax - 3265kg)

Air-conditioning

- Central air-conditioning system

Air- Conditioning Hours

- 8.30am - 6.00pm (Mon-Fri)
- 8.30am - 12.30pm (Sat)
- (excl. Sundays and PH)

Loading Bay

- 2 nos

Car/Lorry Parking Lots

- Approximately 82

Bicycle Lots

- Approximately 54

Disclaimer: This document is prepared for information only. Boustead Projects Limited makes no guarantee that the information contained herein is accurate or complete.



BOUSTEAD
Projects