

The background of the entire page is a close-up photograph of a large jet engine, showing the fan blades and the central hub. A white circuit board pattern with various nodes and lines is overlaid on the top right corner. A large, white, stylized arrow graphic points from the top left towards the bottom right, passing behind the main title.

Subang Aerotech Park

Cutting Edge Industrial Aviation Park

Jointly developed by:

BOUSTEAD PROJECTS



Subang Aerotech Park

Bringing Malaysia to the forefront of the industrial-aviation field



Our Vision

Aligned with National Aerospace Blueprint 2015-2030 and one of the top priorities in the aerospace industry, Subang aerospace hub is fertile for development. This is where Malaysia Airports and Boustead Projects join forces to serve the growing market's needs, as well as sustaining the long-term growth of aerospace and aviation cluster.

► Key features



1 Championing Industry 4.0
State-of-the-art smart facilities



2 Secured park to host global aerospace players
Gated and guarded with park and facilities management



3 Catering to industry needs
Build-to-Suit facility development, including options for high-spec/high-end, environmentally friendly buildings



4 Economic impact
Supporting over 5,000 jobs and attracting more than RM1 billion of investments by 2025



5 Total area
Greenfield development of approximately 60 acres

► Connect your business to the ASEAN region



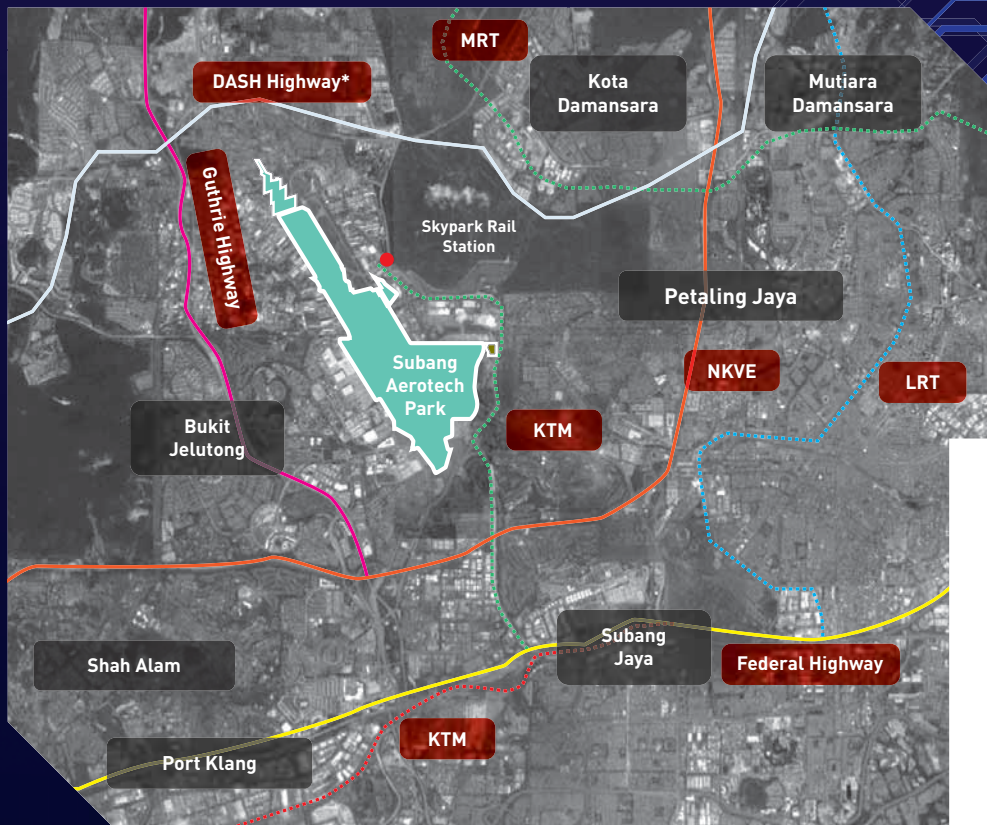
By Road

- Connected via 5 major expressways
- Bonded trucking services available
 - Subang to Thailand : 530km
 - Subang to Singapore : 350km
 - Subang to Port Klang : 34km
 - Subang to KLIA : 54km



By Rail

- Connected to an integrated rail network through Subang Skypark Link



Legend

- 7 surrounding mature townships
- Expressways and highways
- * Upcoming highway
- Railway links
- Railway links
- Railway links



▶ A Mature Aerospace Ecosystem

Since its formation, Subang Airport has welcomed investments of over RM400 million and created 3,200 jobs.

A complete aerospace ecosystem with over 70 companies. Covering MRO, manufacturing, training, parts distribution and logistics, plus other supporting value chain services.

MRO

- GE Aviation (GEESM)
- GTA – Safran
- RUAG
- AIROD
- Skyways Technics (for ATR)
- Asia Aerotechnic
- TP Aerospace
- Galaxy Aerospace

Manufacturing (Aerostructures)

- Spirit Aerosystems
- Senior Aerospace

General / Business Aviation

- Execujet
- Hawker Pacific
- Skypark FBO
- Sapura Aero

Training & Human Capital Development

- UniKL MIAT-MARA

Helicopter Centre

- Airbus Helicopter Malaysia
- Leonardo (Agusta Westland)

Subang Airport Concept Plan

Clear Spatial Planning & Demarcation



Legend

CITY AIRPORT

BUSINESS AVIATION HUB

AEROSPACE ECOSYSTEM

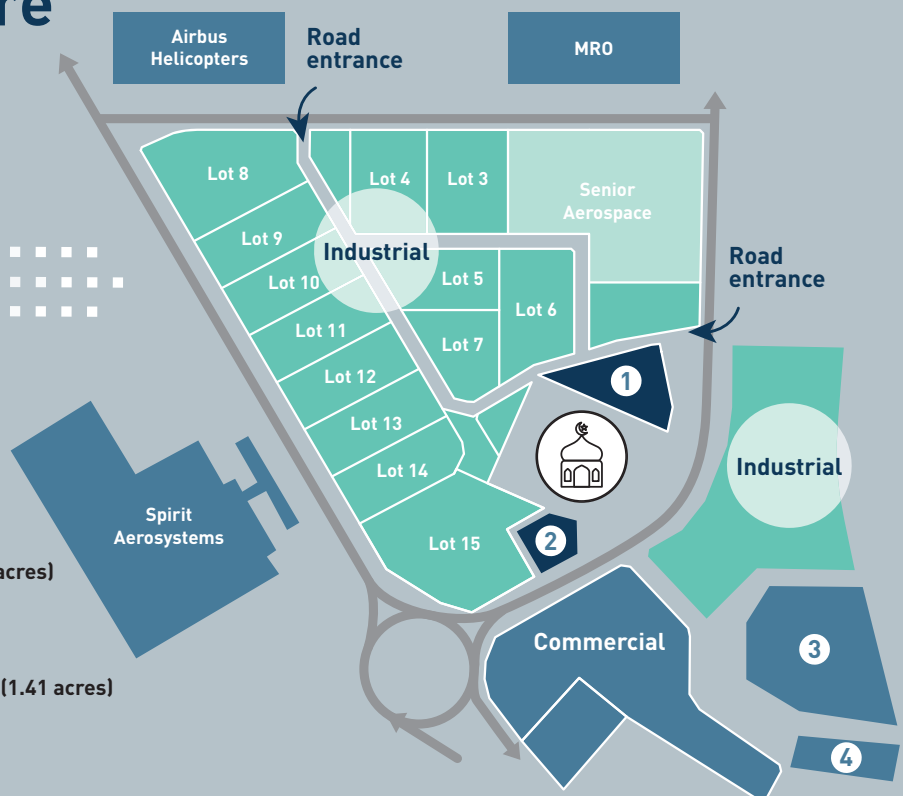
- 1 Subang Aerotech Park
- 2 MRO
- 3 Helicopter Centre
- 4 Training
- 5 Manufacturing

Infrastructure Overview

On track for completion by September 2020

Common infrastructures

- 1 Elevated water tank (1.47 acres)
Capacity of 169k gallons
- 2 Provision for TNB PPU 33kV (0.9 acres)
- 3 Detention Pond (6.21 acres)
- 4 Sewerage Treatment Plant (STP) (1.41 acres)
7,200 population equivalent (PE)



Estimated plot sizes from 1.5 acres to 3.8 acres.
Plots can be allotted to client's requirements.

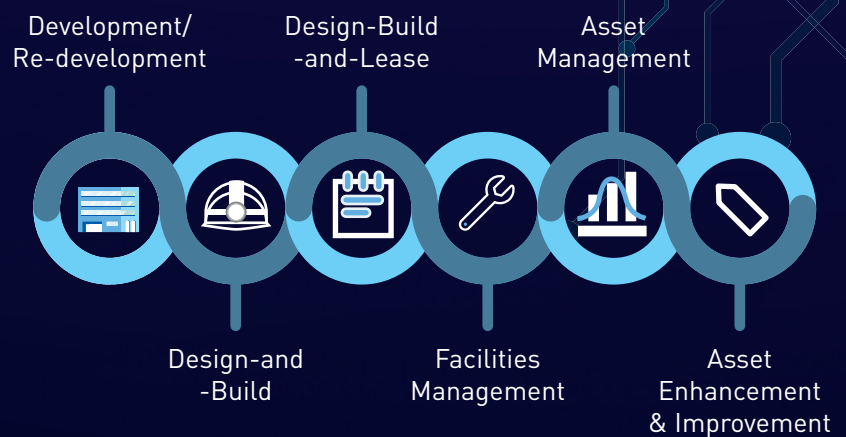
► Typical Build-to-Suit facilities



Providing Build-to-Suit facilities and long term lease focusing on:

- Manufacturing – aerostructures, components, tools & jigs
- MRO – component and engine
- High Tech / Precision Engineering
- Aerospace logistics

► Real Estate Solutions Provider



► Why Subang Aerotech Park?



Mature aerospace ecosystem within airport vicinity



Central location

- Easy access to Kuala Lumpur International Airport (KLIA), Kuala Lumpur City Centre (KLCC) and Port Klang



Access to skilled and multilingual workforce

- Malaysia is the second most talent-competitive country in Southeast Asia¹



Ease of doing business

- Malaysia is ranked second in Southeast Asia for ease of doing business and in the Global Competitive Index²



Urban population and multitude of residential townships



Extensive choices of schools, F&B outlets, malls, and public amenities

¹ Source: IMD 2019

² Source: World Bank (2019), World Economic Forum (2018)

Our Expansive Portfolio



SPIRIT AEROSYSTEMS (M) SDN BHD

- Boeing's largest aircraft parts supplier has its regional facility in Subang and has attracted a variety of Tier 2 and 3 players to Subang since 2007.
- The company operates a 357,000 sq ft manufacturing and assembly, Build-to-Suit facility within a 45-acre site.
- Parts are shipped from the Main Sub-Assembly facility in Subang to the Final Wing Assembly unit of Airbus in Broughton, UK.

MRO CENTRE

- Regional Centres for international players such as:
 - RUAG (Swiss) MRO for Starter Generator and Fuel Pump
 - Skyways Technics (Danish) Component MRO specialising in ATR aircraft

HELICOPTER CENTRE

- Subang's helicopter centre hosts 7 players within a 20-acre site, including Airbus Helicopters, Leonardo (Agusta Westland), BHIC (Boustead), and PLUS.
- Airbus Helicopters operates in a 100,000 sq ft Build-to-Suit facility, with office building, dedicated hangar, and simulator centre (first of its kind in ASEAN).

BOUSTEAD PROJECTS



BOMBARDIER
[Seletar Aerospace Park]

6,290 sq m integrated aircraft service centre, MRO hangar, and office facility



SATAIR
[Seletar Aerospace Park]

25,400 sq m service repair, distribution and office facility and training centre



ROLLS-ROYCE
[Seletar Aerospace Park]

28,000 sq m integrated high-tech manufacturing and support facility



ROLLS-ROYCE
[Seletar Aerospace Park]

7,910 sq m integrated jet engine testing and control facility



SAFRAN
[Changi North]

6,000 sq m integrated manufacturing and office facility



AIRBUS
[Seletar Aerospace Park]

9,060 sq m two wings of flight simulator hall and 10 full-flight simulators

Kindly contact our representatives for enquiries:

Boustead Projects

Eric Hee | +6012 310 8986
eric.hee@boustead.sg

Malaysia Airports

Saravana Kumar | +6014 7259415
saravana@malaysiaairports.com.my

Scan the
QR code for
more info



Disclaimer:

The Developer makes no representations or warranties, conditions, undertakings or terms either expressed or implied as to the condition, quality, accuracy, fitness for purpose, completeness of the information contained herein or that such information will be accurate, up to date, or free from error. All art renderings and pictures herein are artist's impressions only and all specifications stated herein are subject to re-survey and approval from the relevant authorities. The information and specifications contained herein do not form part of an offer or a contract and neither the Developer nor their appointed Marketing Agents can be held for any inaccuracies, changes, losses or damages arising therefrom.